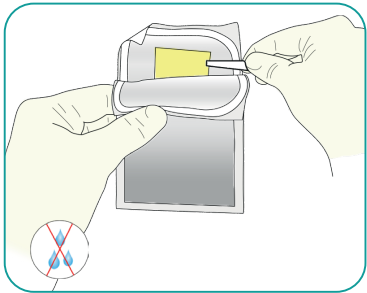
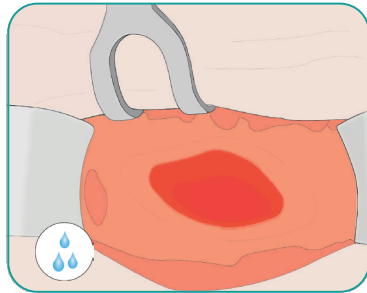


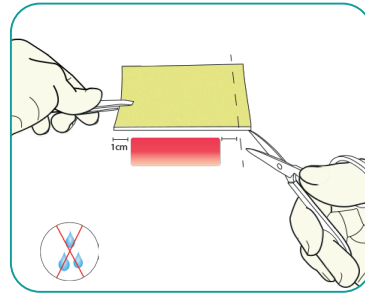
## Application and usage



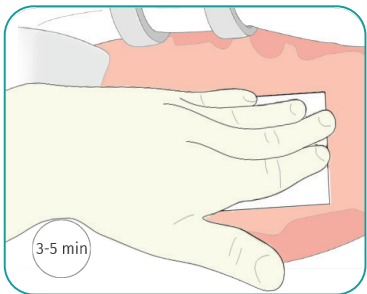
1. Take out the fleece under sterile conditions.



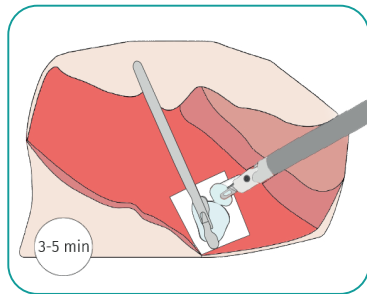
2. Clean / rinse the wound. **Whole application area moist, not dripping wet.**



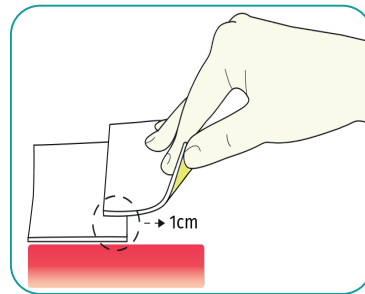
3. If needed, cut fleece to size. **Do not** moisten the fleece.



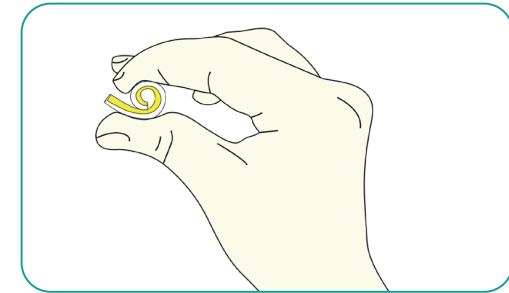
4. Apply the dry fleece with **yellow side** on the moist tissue. Apply gentle pressure on the **full surface** of the fleece for 3 - 5 minutes.



5. If more than one fleece is needed, provide an overlap of 1cm.



For minimally-invasive use:



Roll up the dry fleece with the white side facing outwards and insert it into the trocar (recommendation: through optics trocar). Continue as described under 4 - 5.

To maintain the optimal position of the fleece, we recommend no further rinsing. On contact with tissue fluid, the fleece becomes semi-transparent and allows the assessment of haemostasis.

**Important:** This application note does not replace the Instructions for Use. Notes on usage, contraindications and warnings listed in the IFU must be observed.